

THE LANCASTER

2,755 SQ.FT. | 2-CAR GARAGE

38'
DETACHED
COLLECTION

THE LANCASTER

2,763 SQ.FT. | 2-CAR GARAGE

38'
DETACHED
COLLECTION

AVAILABLE OPTIONS



AVAILABLE OPTIONS



ELEVATION A



ELEVATION B

THE LANCASTER

2,755 SQ.FT.

38' DETACHED COLLECTION



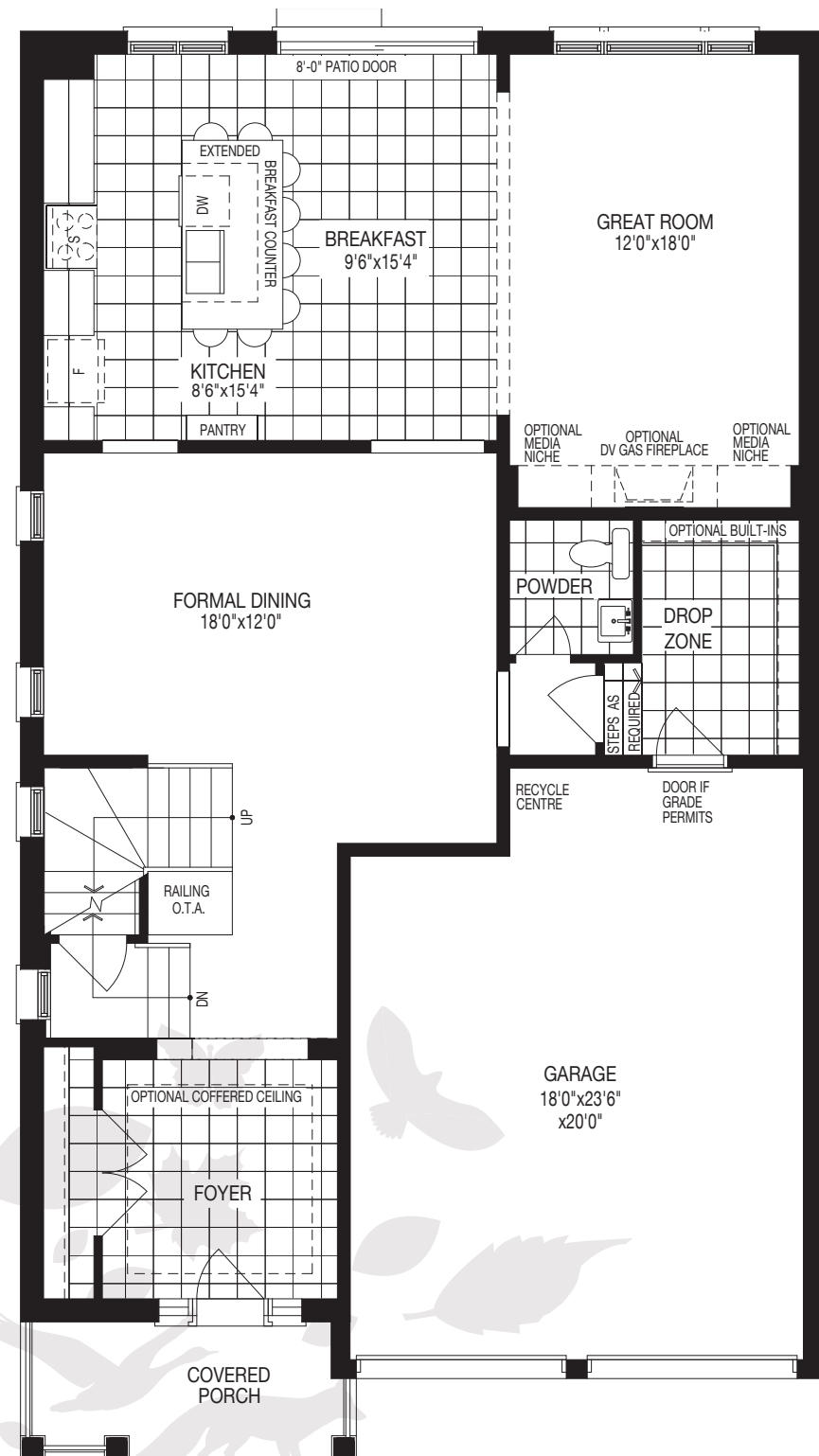
Double Master Bedroom Option



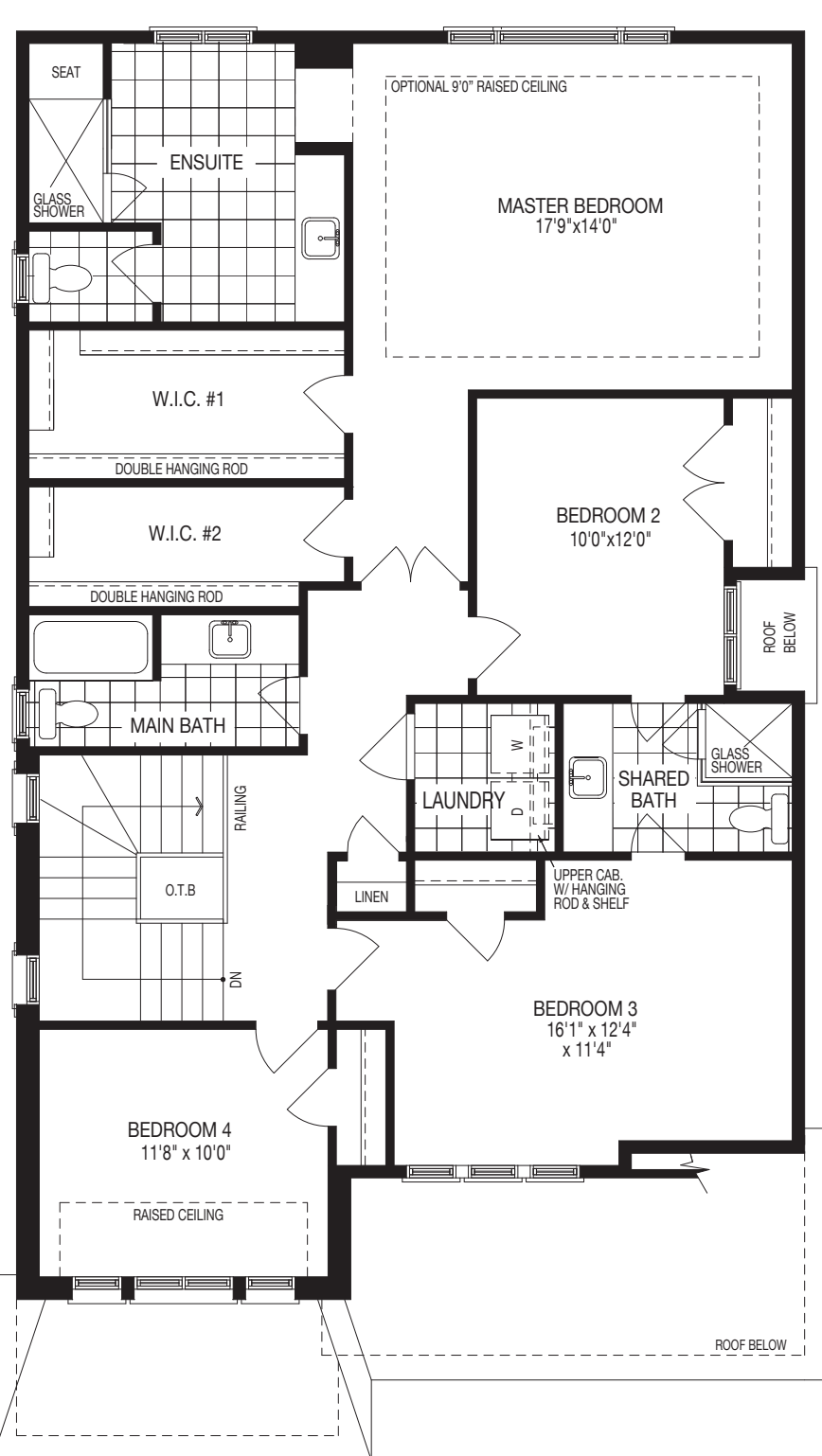
Finished Basement Suite Option



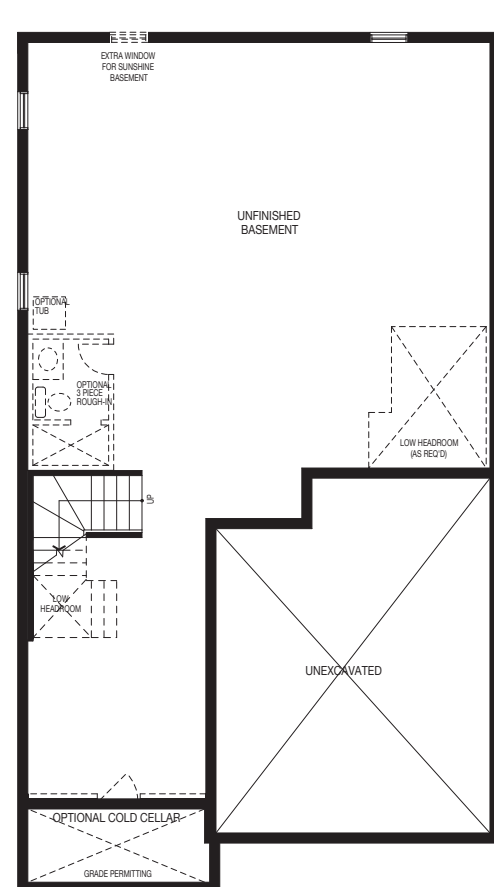
Main Floor
ELEVATION A



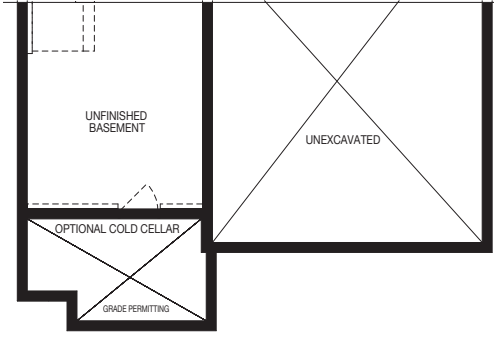
Second Floor
ELEVATION A



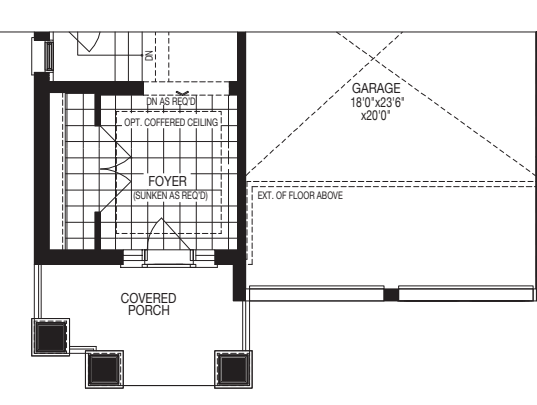
Basement
ELEVATION A



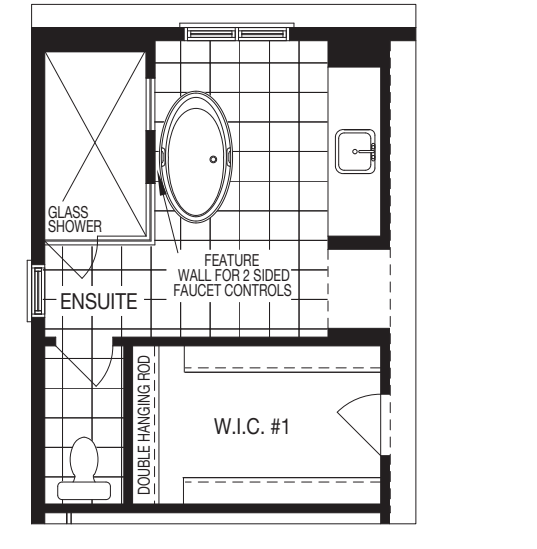
Basement
ELEVATION B



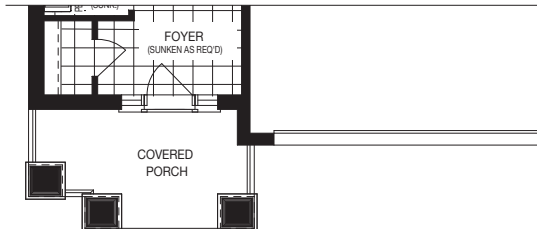
Main Floor
ELEVATION B



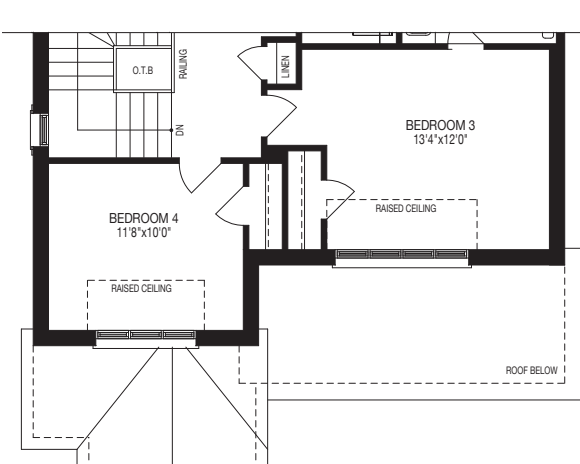
Opt. Ensuite



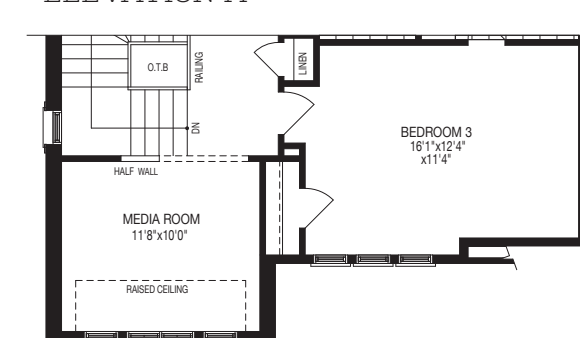
Opt. 16' Garage Door



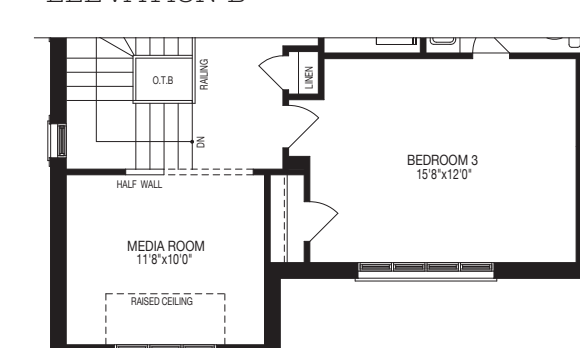
Second Floor
ELEVATION B



Opt. Media Room
ELEVATION A



Opt. Media Room
ELEVATION B



The floor plans and elevations shown are pre-construction plans and may be revised due to architectural design requirements or construction requirements at Ventura's Discretion. Dimensions are approximate and actual usable floor space may vary from the stated area. House may be reversed and purchaser agrees to accept same. The number of exterior steps at porches (and at other exterior doors) will vary due to grading. Sunken living areas in the home may be required to accommodate grading. Location of the furnace, HWWT, and HWV equipment is not shown and will be determined at a later date. Appliances and indoor & outdoor furniture are not included. Illustrations are Artist's concept. E. & O.E. August 2020.



Two Master Bedrooms are more affordable than one.

This innovative floorplan option opens the door to an array of financial and lifestyle benefits, while providing the opportunity to share comfort and cost savings. The options are as flexible as you are.

ENJOY THE BENEFITS OF INNOVATIVE THINKING

Double Master Bedroom Plan

Double Master Bedrooms
ELEVATION A

Imagine having privacy, togetherness and convenience. Honeyfield Communities offers an innovative home plan specifically designed with Double Master Bedroom Plans for either multi-generational use or for two owners who recognize the benefits of cost savings through sharing home ownership with co-habitation. It's another great option to share life.



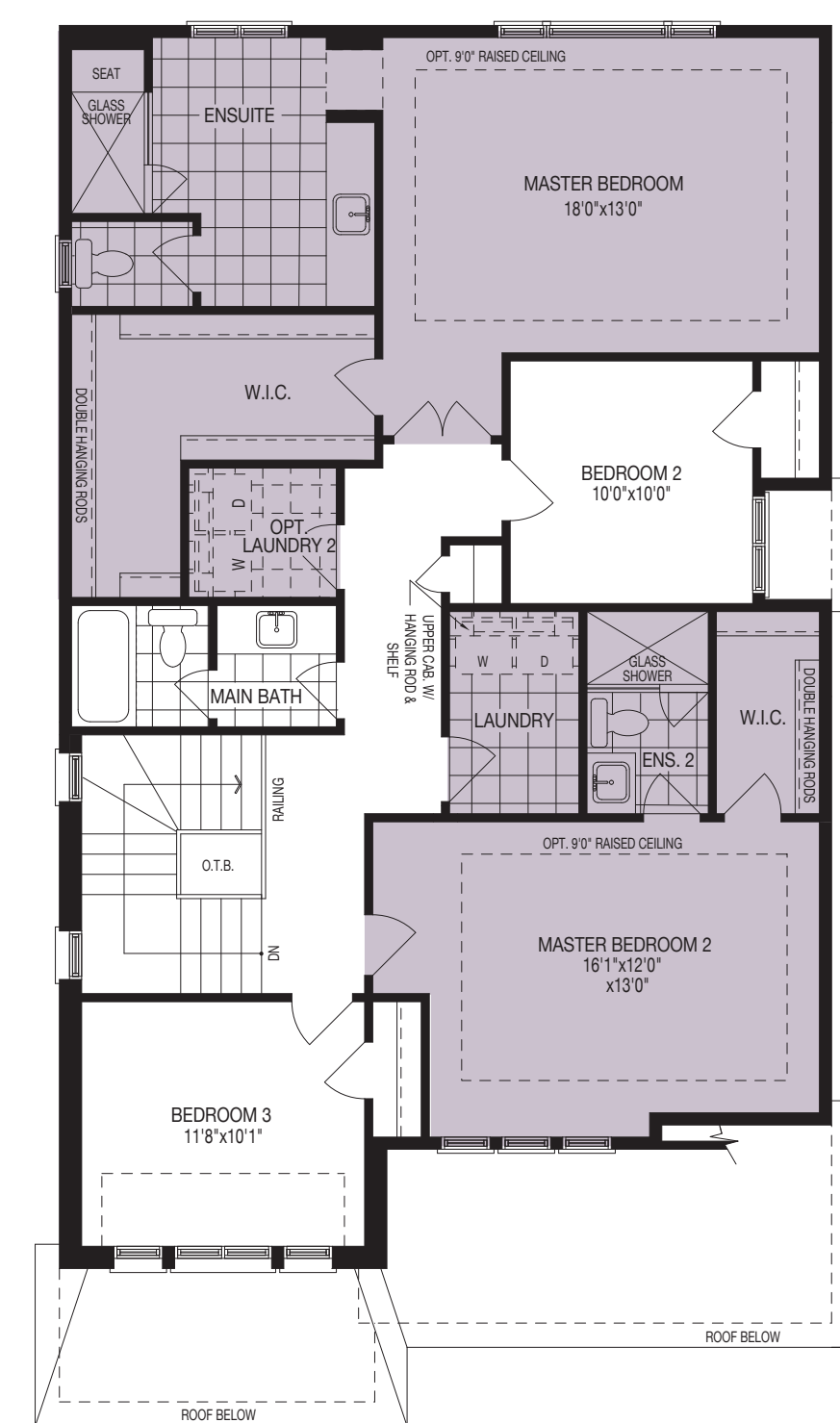
A BIG ADDITION TO THE FAMILY

As parents get older, every family reaches the point where they have to have a conversation about their living situation going forward. The Double Master Bedroom Plan provides enough space and privacy for in-laws to join the family full time. It really begins to make sense with multi-generational thinking at Ventura.



SHARE THE COST OF MORE SPACE

Here's an option that provides a new way for two homebuyers to enjoy the benefits of more space and features of a single family home by sharing the costs of the mortgage. The Double Master Bedroom plans at Ventura makes home ownership now possible to many with privacy, convenience and better quality of life.



THE HONEYFIELD DESIGN ADVANTAGE

DOUBLE ZONE LIVING

Finished Basement Suites

Comfortably separated options take multi-generational living to another level

This is flexible family living with a careful consideration of the needs of modern day urban living. In fact, at Ventura, we have transformed basement space to be as comfortable, bright and beautiful as the rest of your new home. Conveniently suited

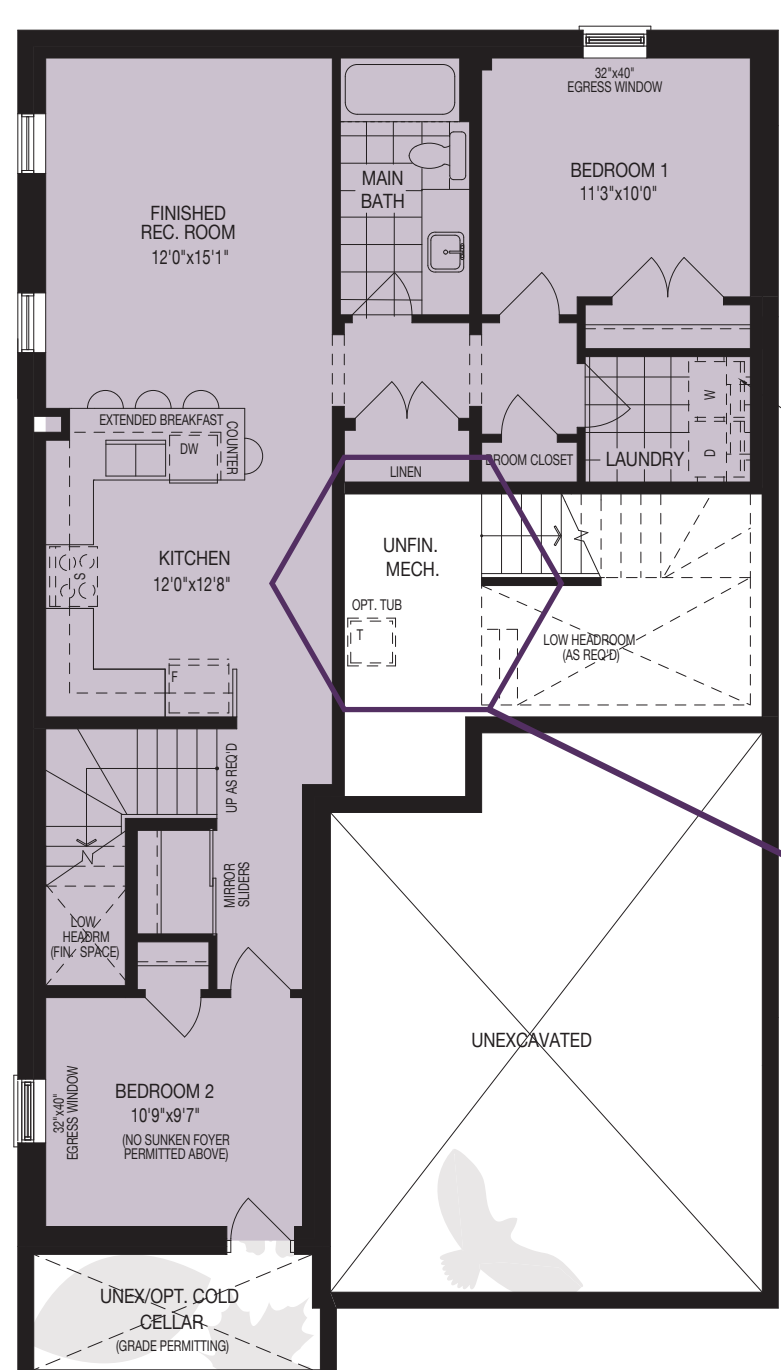


to a double occupancy, Ventura's Secondary Basement Suite maximizes space with the beautiful master suite, kitchenette and stunning open plan downstairs for independent living. Consider combining it with a Sunshine Basement' option to suit your needs and hobbies. This great design really does provide everyone in the family with their own space and privacy.

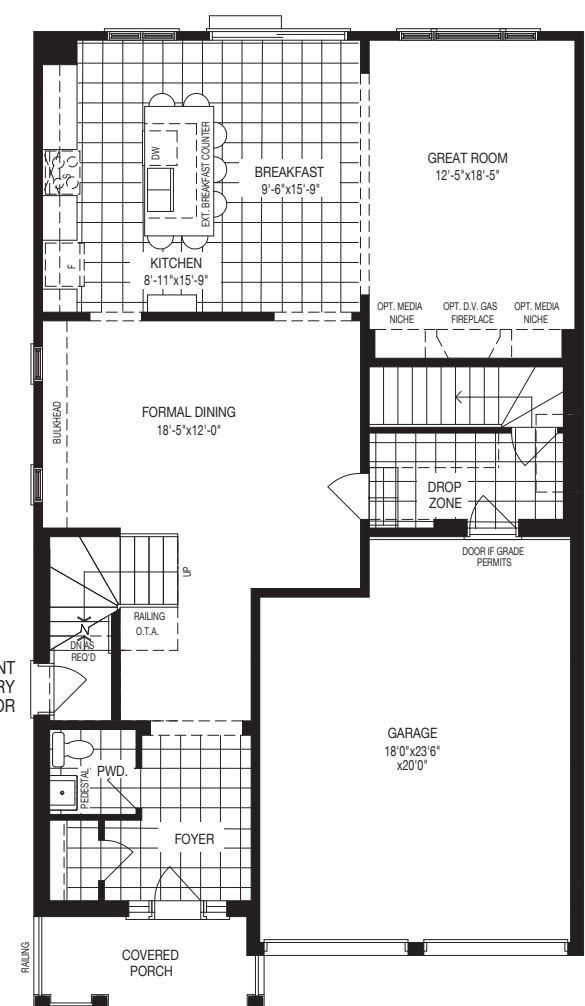


* Sunshine Basements are available on specific lots only. See Sales Associate for details.

Finished Basement Suite
ELEVATION A



Finished Basement Suite
Main Floor
ELEVATION A



Opt. Second Entry to Finished Basement Suite from Interior of Home



THE HONEYFIELD DESIGN ADVANTAGE